

# ISNP

International School of  
Neuropelveology



# ISON LEVEL 1 EDUCATIONAL WEBINAR SERIES

SPEAKER:

**MARC POSSOVER, MD, PHD, PHD**



FEBRUARY 15TH 2025

SATURDAY

MARCH 15TH 2025

SATURDAY

APRIL 12TH 2025

SATURDAY

APRIL 26TH 2025

SATURDAY (EXAM)



2 PM- 6 PM (CET)

EXAM 3PM - 4 PM (CET)

[www.possover-  
neuropelveology.com](http://www.possover-neuropelveology.com)



# WEBINAR PROGRAM - ISON LEVEL 1 "CLINICAL NEUROPELVEOLOGY"

## SCHEDULE OF TOPICS

**Time:** 14:00 – 18:00 CET (9am BRST)  
**Speaker:** Prof. Dr. med. Marc Possover  
**Language:** English  
**Venue:** Online via Zoom

[Online Registration](https://www.possover-neuropelveology.com)

[www.possover-neuropelveology.com](https://www.possover-neuropelveology.com)



### 10.00 AM - 1st. WEBINAR - 15th February 2025

- Definition and history of Neuropelveology
- Neurofunctional anatomy of the pelvic somatic nervous system
- Neurofunctional anatomy of the pelvic autonomous nervous system
- Functional innervation of the pelvic organs
- Q&A



### 4.30 PM - 2nd WEBINAR - 15th March 2025

- Main aspects of patient's history in neuropelveology
- Diagnosis and Management of inguinal neuralgias
- Endometriosis of the pelvic somatic nerves
- Pelvic congestion syndrome and pelvic neuropathies by vascular entrapment
- Pudendal pain and pudendal neuralgia - symptoms and etiopathogeneses
- Q&A (also includes questions about the 1st webinar)



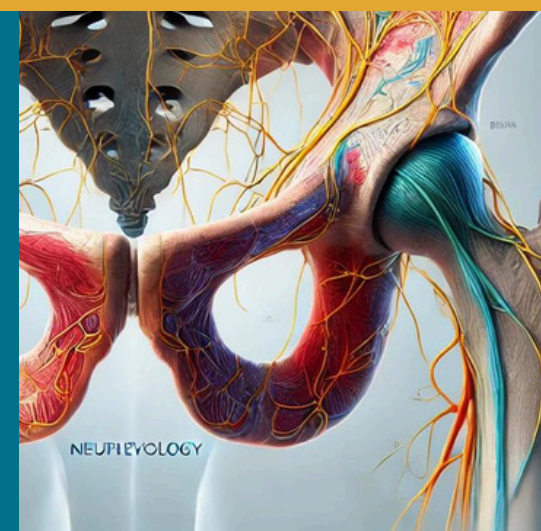
### 30 PM - 3rd WEBINAR - 12th April 2025

- Principles of neuro-stimulation/-modulation
- LION and GNS procedures for treatment pelvic organs dysfunctions
- Pathophysiology of spinal cord injuries and other pathologies
- The Possover's LION procedure in SCI
- Innovations in Neuropelveology
- Q&A (also includes questions about the 2nd webinar)



### ISON LEVEL 1 - ONLINE EXAMEN (ZOOM)

- Date: 26th April 2025, Saturday
- Time: 15:00 – 16:00 CET (10am - 11 am BRST)



# WEBINAR PROGRAM - ISON LEVEL 1 "CLINICAL NEUROPELVEOLOGY"

## REGISTRATION

First name	Title
Last name	
E-Mail	
Address	

## PAYMENT INFORMATION

COURSE FEE FOR ISON-Level 1 IN CLINICAL NEUROPELVEOLOGY: 1000,- EUR

BANK: ISNP-International School of Neuropelveology GmbH  
Zuger Kantonalbank - IBAN: CH31 0078 7007 7130 0410 7 - BIC: KBZGCH22XXX -  
SWIFT: KBZGCH22

REGISTRATION INCLUDES: Webinar, Zoom access, online exam and certificate.

CANCELLATION AND REFUNDS: Cancellation requests must be made in writing by email to [info@isnp-gmbh.com](mailto:info@isnp-gmbh.com) no later than three weeks prior to the first day of the 1st webinar. No refunds will be given after this time:

PLEASE RETURN THIS COMPLETED WITH PAYMENT (NO LATER THAN TWO WEEKS PRIOR TO THE FIRST WEBINAR) BY E-MAIL to:

[info@isnp-gmbh.com](mailto:info@isnp-gmbh.com)

